



Royal House

TILES COLLECTION

INDEX

COLLECTION

ABOUT US

Page 03

ALASKA COLLECTION

Page 04 - 09

LAS VEGAS COLLECTION

Page 10 - 13

MARYLAND COLLECTION

Page 14 - 29

ORLANDO COLLECTION

Page 30 - 39

SUNSET COLLECTION

Page 40 - 53

TECHNICAL SPECIFICATIONS

Page 54 - 55

About us - Royal House

Royal House is a trading and development company in the United States, operating under direct management from the head office and factory facilities of Royal Group, one of the top manufacturing and trading corporations in the tiles and quartz stone industry in Vietnam.

Inheriting pride in such ability, Royal House puts a lot of effort into bringing out what is best in our products and services, and customer service is at the heart of everything we do. We are proud to achieve a milestone of 22 years of serving in the industry. It is a lively illustration of Royal Group's ability to evolve and provide our customers' satisfaction with the quality of products and services, which meets their expectations.

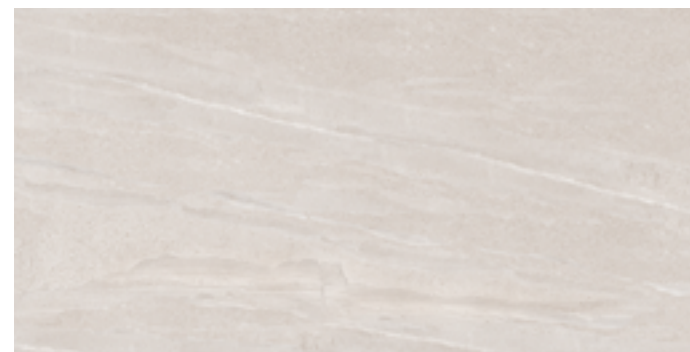
Additionally, we are not only quartz stone specialists but also solution specialists, providing trade customers a wide product assortment needed for successful commercial and personal projects. Over the last few years, we have been recognized as one of the most efficient distributors in the United States, extending our trade coverage across the country with 4 trading US-based companies.

We are committed to serve and be your long-term partner to the best of our capacity.

To the best of our capacity, we are here to serve to be your long-term partner with commitment.



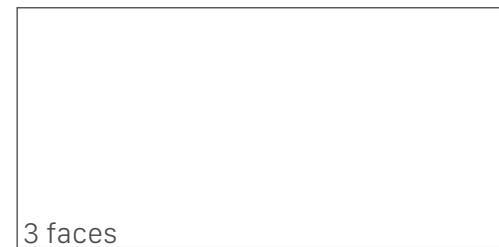
ALASKA COLLECTION



ALASKA COLLECTION
Lappato

61240020

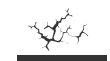
P VI Cream



3 faces

600 x 1200 mm
24 x 48 inches

TECHNICAL SPECIFICATIONS



RESISTE



UA



RESISTE

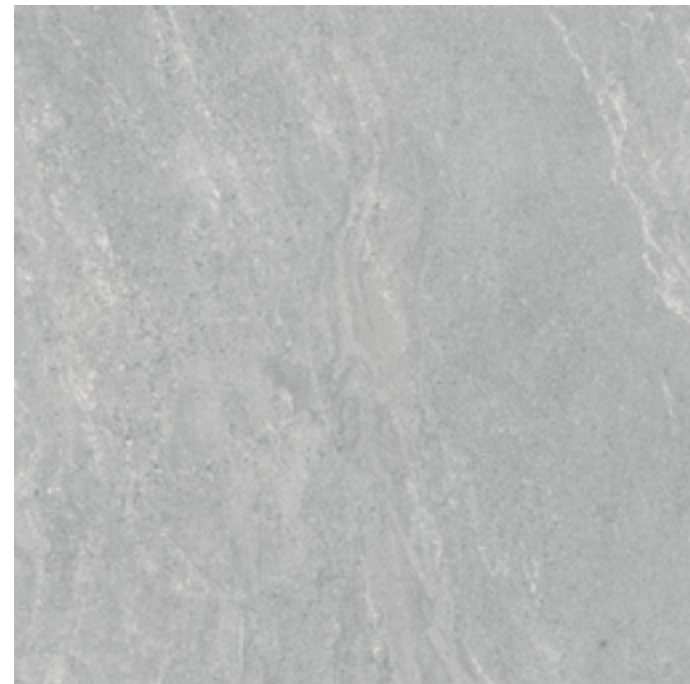


< 0,5%



C5

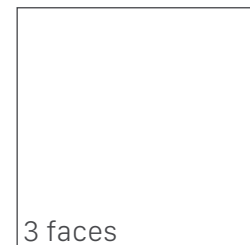




ALASKA COLLECTION
Lappato

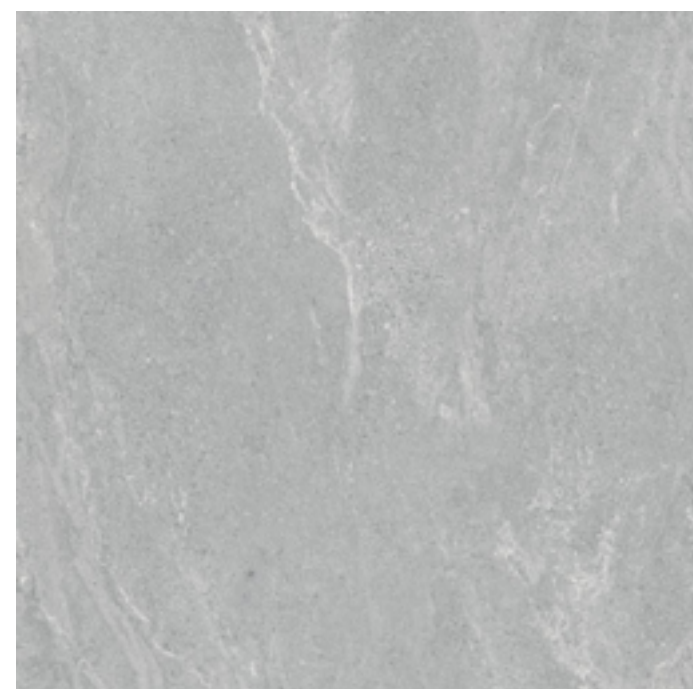
VGLAP01

P VI Grey



3 faces

600 x 600 mm
24 x 24 inches



TECHNICAL SPECIFICATIONS



RESISTE



RESISTE



RESISTE



< 0,5%



C5



UA



DCOF >0,42





LAS VEGAS COLLECTION



LAS VEGAS COLLECTION
Matt antislip

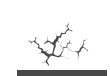
RA360C

P VI Grey



3 faces
300 x 600 mm
12 x 24 inches

TECHNICAL SPECIFICATIONS



RESISTE



RESISTE



< 0,5%



C5



UA



DCOF >0,42
R12





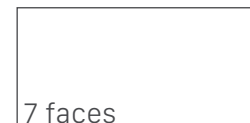
MARYLAND COLLECTION



MARYLAND COLLECTION
Natural matt

RADANIMARCA

P VI Brown



300 x 600 mm
12 x 24 inches



TECHNICAL SPECIFICATIONS



RESISTE



RESISTE



< 0,5%



C5



UA



DCOF >0,42
R12





MARYLAND COLLECTION
Natural matt

RAISLANDA

P VI Grey

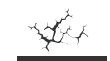


7 faces

300 x 600 mm
12 x 24 inches



TECHNICAL SPECIFICATIONS



RESISTE



RESISTE



< 0,5%



C5



UA



DCOF >0,42
R12



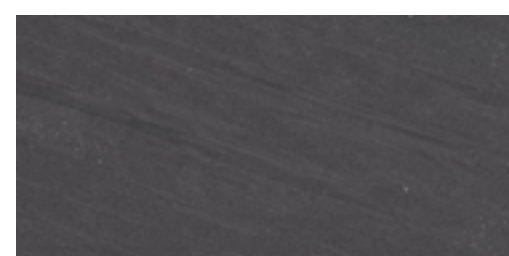
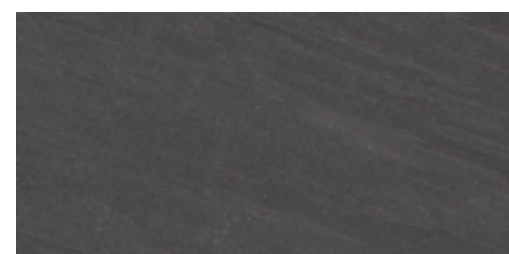
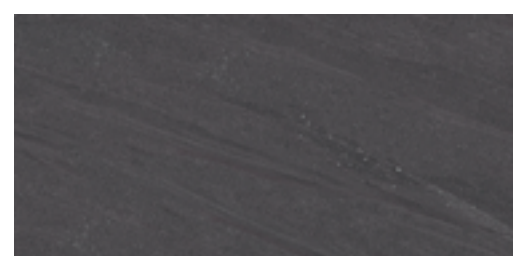
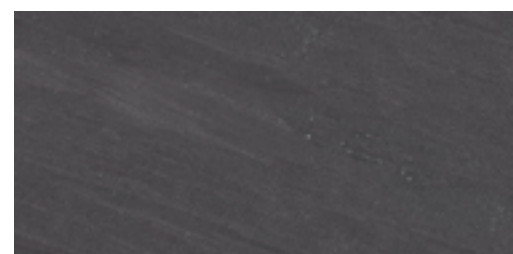
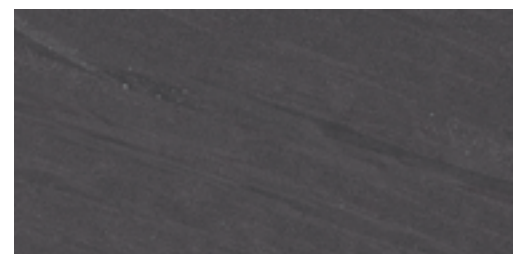
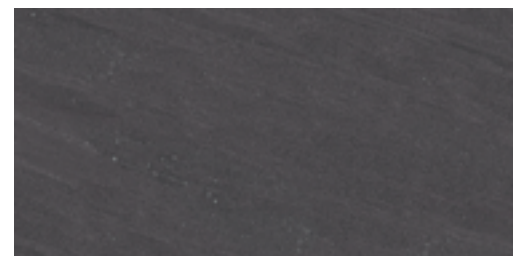
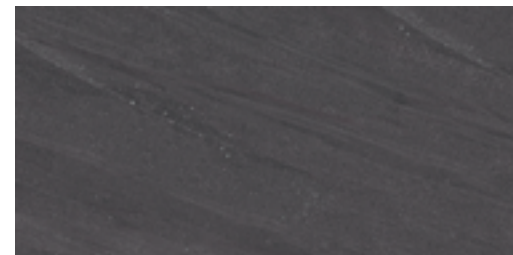
MARYLAND COLLECTION
Natural matt

RA306HP139

P **V2**  Black



300 x 600 mm
12 x 24 inches



TECHNICAL SPECIFICATIONS



RESISTE



RESISTE



< 0,5%



C5

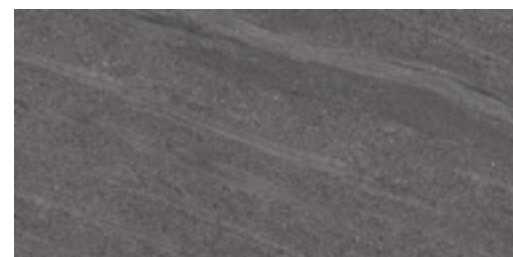
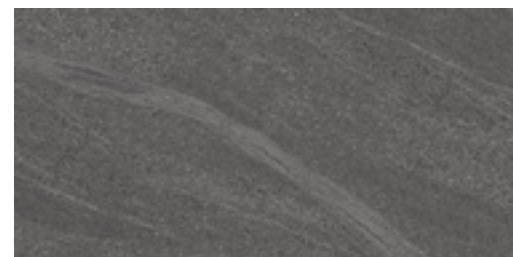
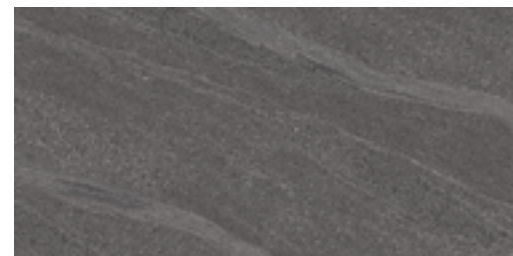
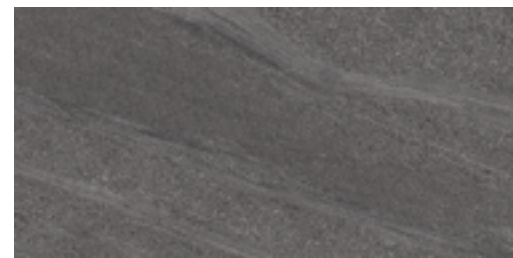
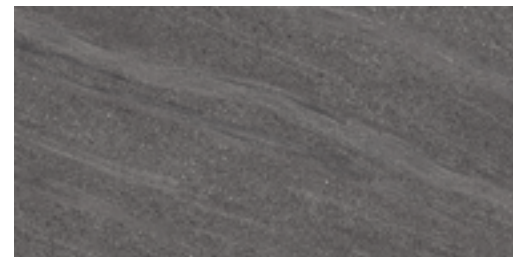


UA



DCOF > 0,42
R10





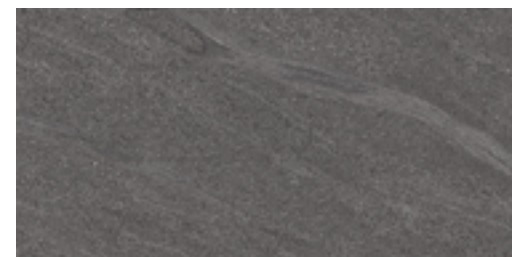
MARYLAND COLLECTION
Natural matt

RA306HP138

P **V2** Dark Grey



300 x 600 mm
12 x 24 inches



TECHNICAL SPECIFICATIONS



RESISTE

t_c°

RESISTE



< 0,5%



C5

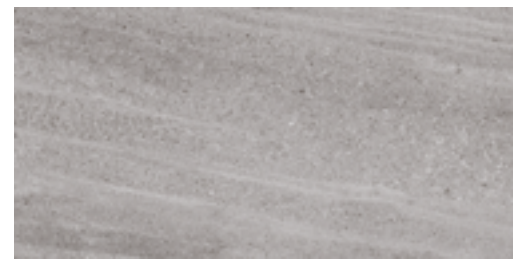


UA



DCOF >0,42
R10





MARYLAND COLLECTION
Natural matt

RA3066131

P **V2** Light Brown

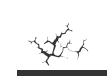


7 faces

300 x 600 mm
12 x 24 inches



TECHNICAL SPECIFICATIONS



RESISTE



RESISTE



< 0,5%



C5



UA



DCOF >0,42
R10





MARYLAND COLLECTION
Natural matt

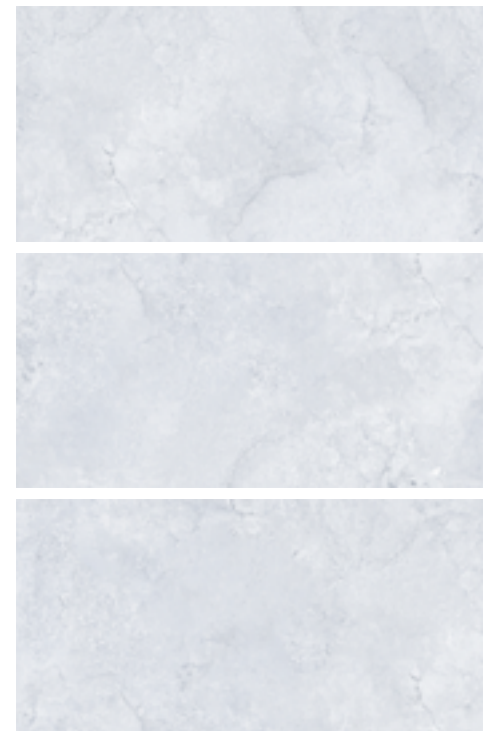
RA306066L

P VI Light Grey

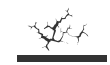


9 faces

300 x 600 mm
12 x 24 inches



TECHNICAL SPECIFICATIONS



RESISTE



RESISTE



< 0,5%



C5

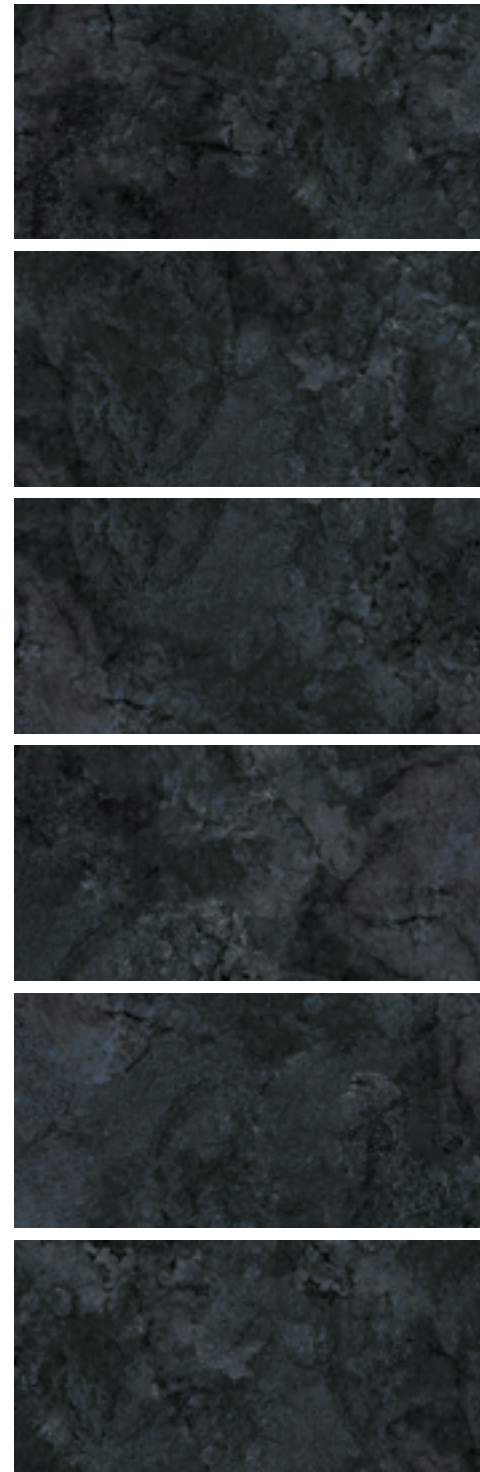


UA



DCOF >0,42
R10





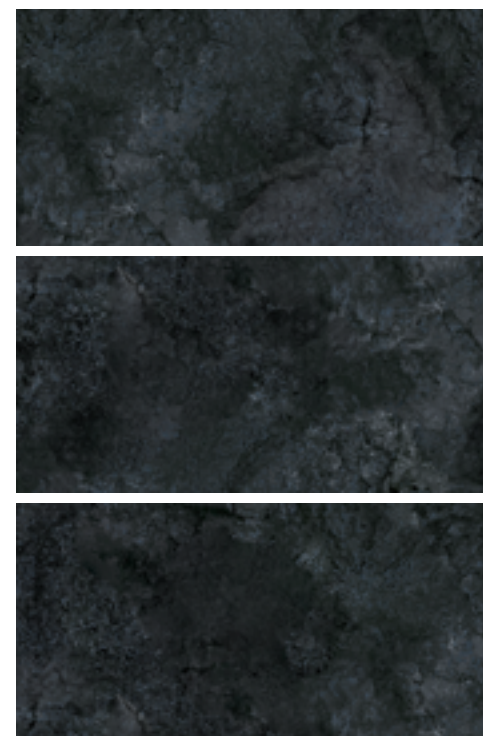
MARYLAND COLLECTION
Natural matt

RA306066D

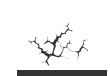
P VI Dark grey



300 x 600 mm
12 x 24 inches



TECHNICAL SPECIFICATIONS



RESISTE



RESISTE



< 0,5%



C5



UA



DCOF >0,42
R10





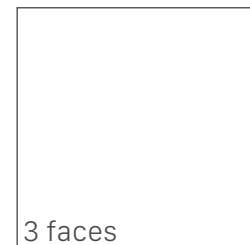
ORLANDO COLLECTION



ORLANDO COLLECTION
Natural Matt

RA306066L

P **V2** Misty Grey

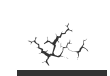


3 faces

600 x 600 mm
24 x 24 inches



TECHNICAL SPECIFICATIONS



RESISTE

t_c°

RESISTE



< 0,5%



C5



UA



DCOF >0,42
R10





ORLANDO COLLECTION
Natural Matt

RAHG366

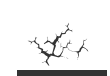
P VI Drak Grey

1 faces

300 x 600 mm
12 x 24 inches



TECHNICAL SPECIFICATIONS



RESISTE

t_c

RESISTE



< 0,5%



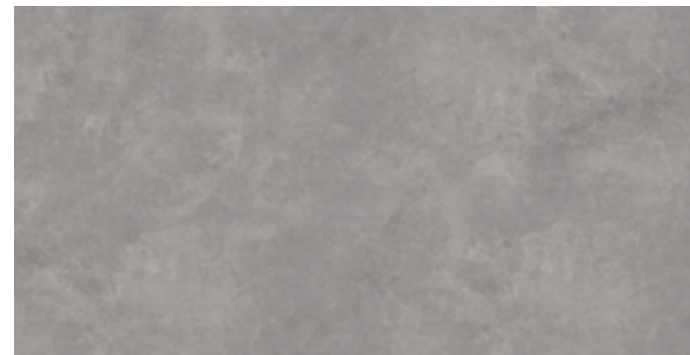
C5



UA



DCOF >0,42
R10



ORLANDO COLLECTION
Natural Matt

RA36858

P **V2** Misty Grey



5 faces

300 x 600 mm
12 x 24 inches



TECHNICAL SPECIFICATIONS



RESISTE



RESISTE



< 0,5%



C5



UA



DCOF >0,42
R10





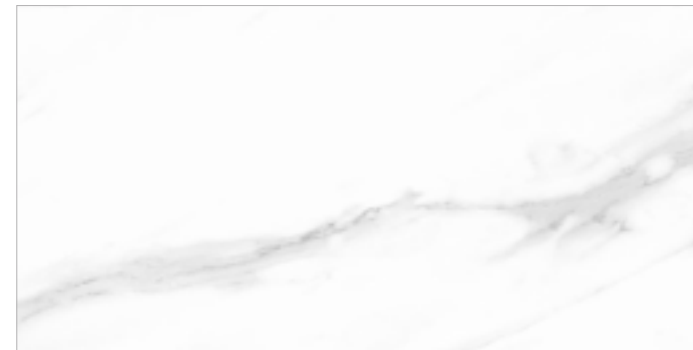
ORLANDO COLLECTION
Natural Matt

JH36A171

P VI Grey

5 faces

300 x 600 mm
12 x 24 inches



TECHNICAL SPECIFICATIONS



RESISTE



RESISTE



< 0,5%



C5



UA

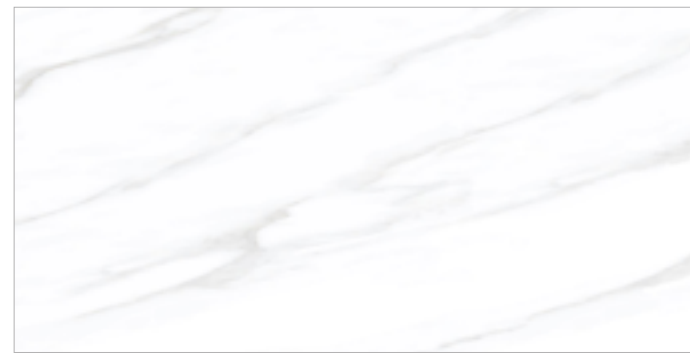


DCOF > 0,42
R10





SUNSET COLLECTION



SUNSET COLLECTION
Polished

NATURAL612008

P VI Light Grey

3 faces

600 x 1200 mm
24 x 48 inches

TECHNICAL SPECIFICATIONS



RESISTE



RESISTE



< 0,5%



UA



C5





SUNSET COLLECTION
Polished

612420005

P VI Light Grey

3 faces

600 x 1200 mm
24 x 48 inches

TECHNICAL SPECIFICATIONS



RESISTE



RESISTE



< 0,5%



UA



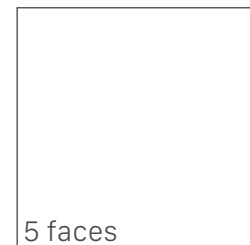
C5



SUNSET COLLECTION
Polished

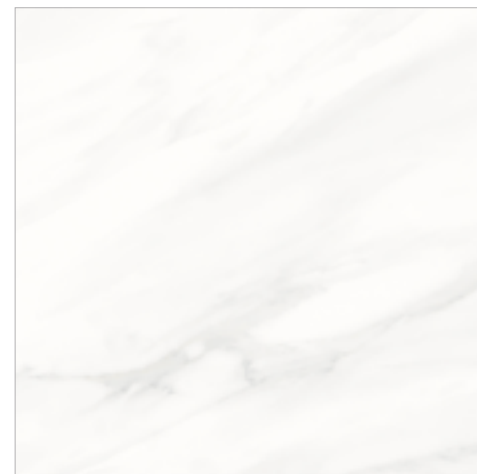
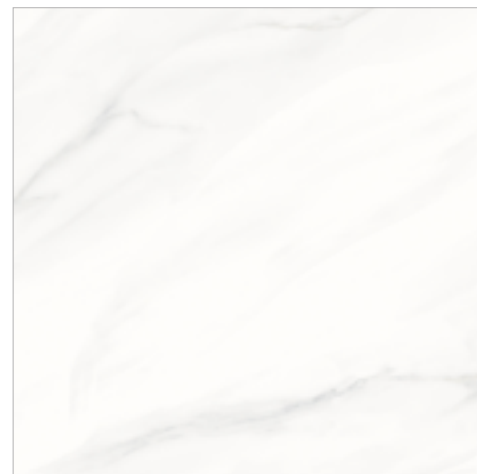
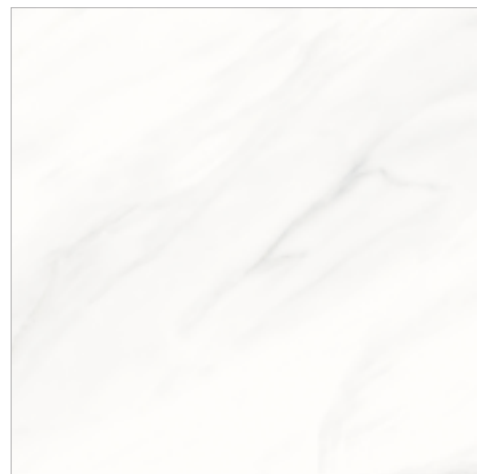
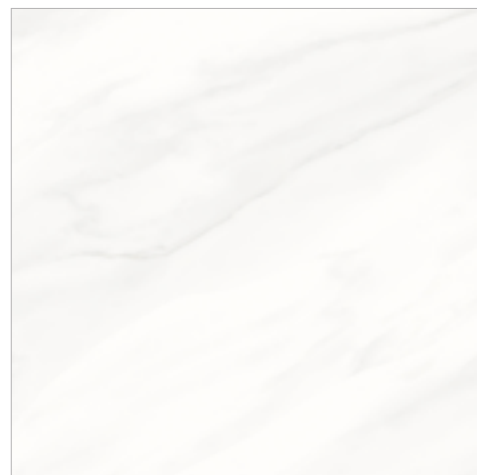
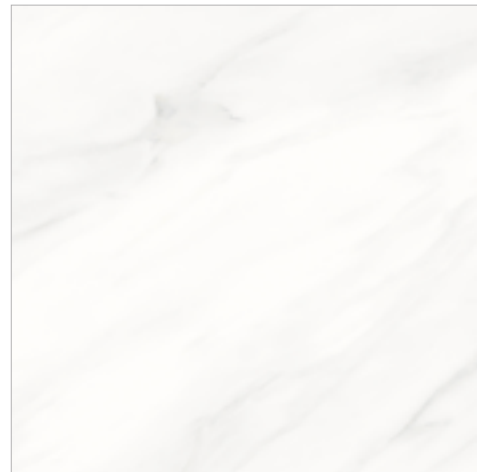
PL60F171

P VI Light Grey



5 faces

600 x 600 mm
24 x 24 inches



TECHNICAL SPECIFICATIONS



RESISTE

t_c°

RESISTE



< 0,5%

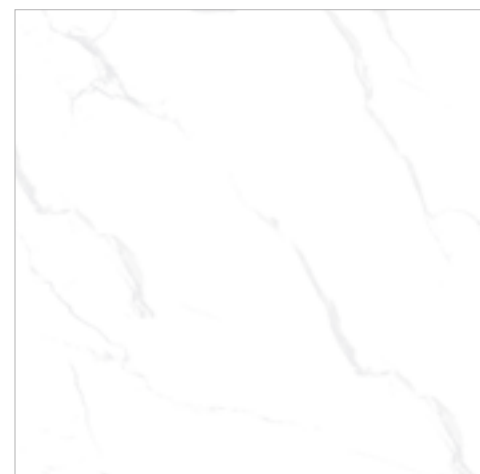
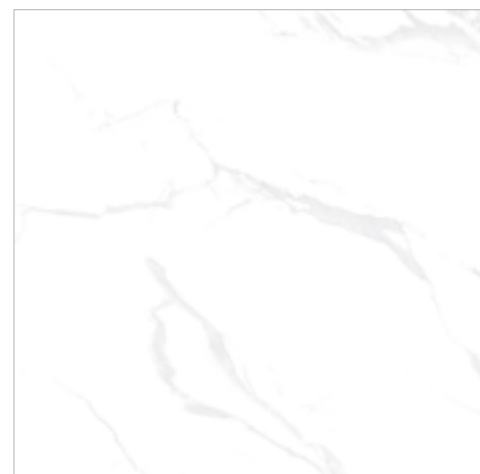


UA



C5

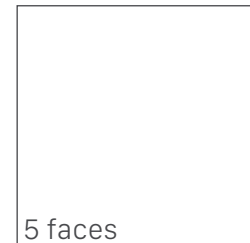




SUNSET COLLECTION
Polished

Jh60f068

P VI Light Grey



5 faces

600 x 600 mm
24 x 24 inches

TECHNICAL SPECIFICATIONS



RESISTE



RESISTE



< 0,5%

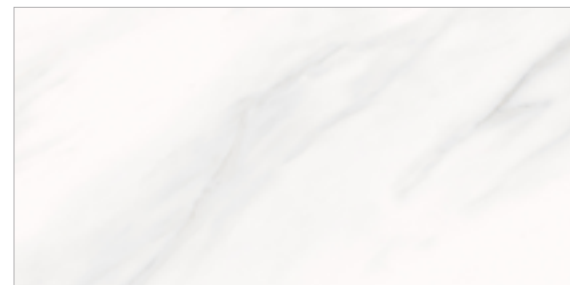
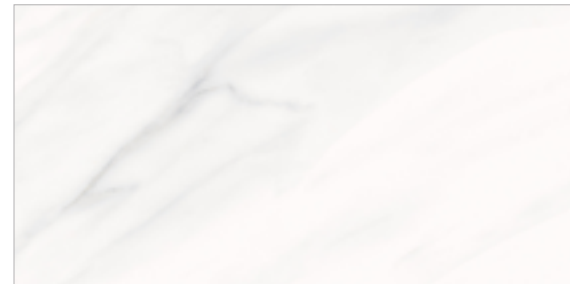
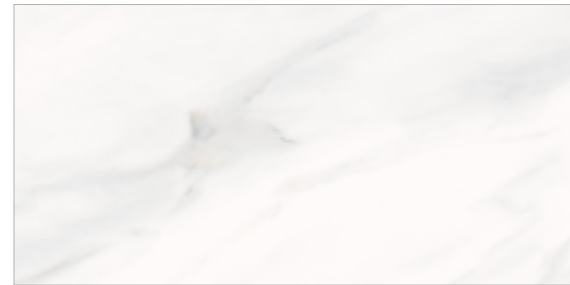


UA



C5





SUNSET COLLECTION
Polished

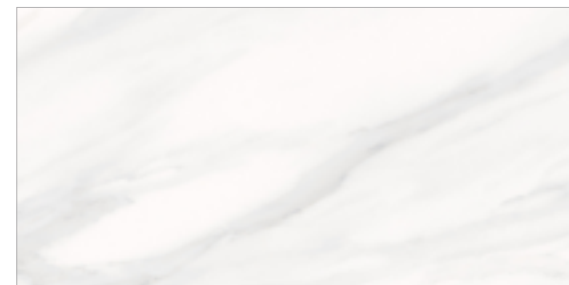
RA30606

P VI Light Grey

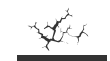


7 faces

300 x 600 mm
12 x 24 inches



TECHNICAL SPECIFICATIONS



RESISTE



RESISTE



< 0,5%

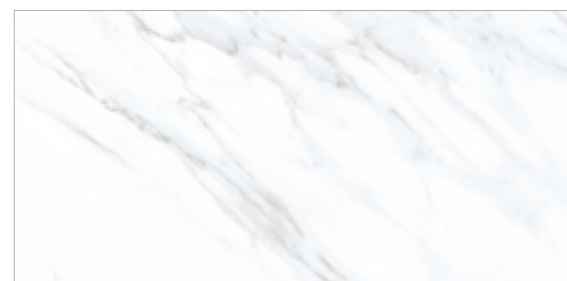
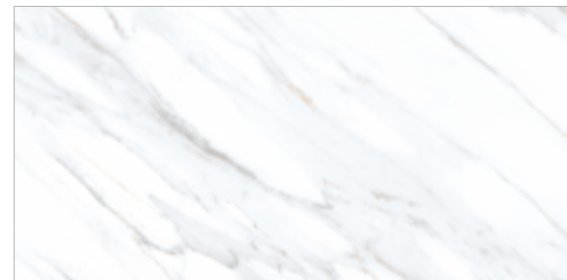


UA



C5





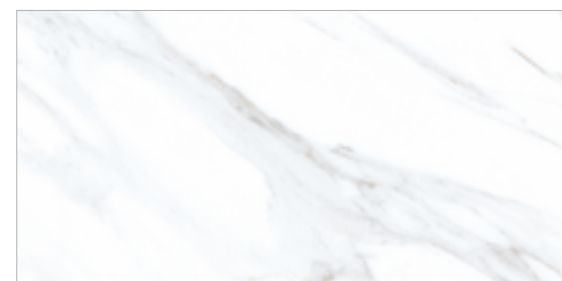
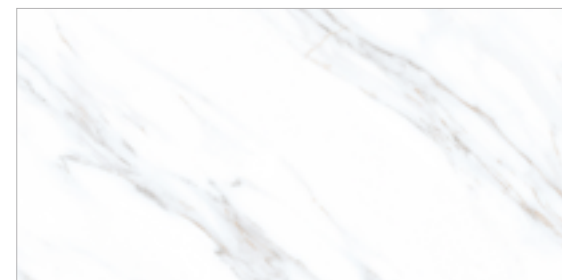
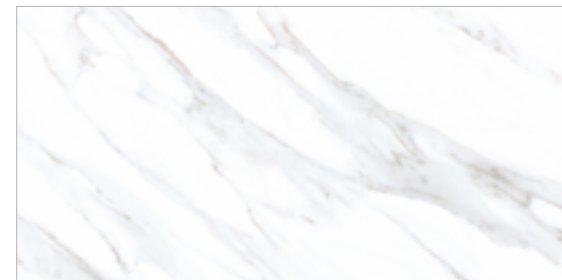
SUNSET COLLECTION
Polished

RA36HP054IA

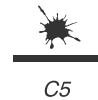
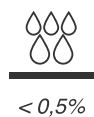
P **VI** Light Grey

8 faces


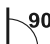





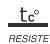
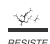


300 x 600 mm
12 x 24 inches



TECHNICAL SPECIFICATIONS



TECHNICAL SPECIFICATIONS

PROPERTIES		RESULTS As tested by VIBM
	Length & Width	+/- 0.4%
	Rectangularity	+0.12%
	Straightness of Sides	-0.01%
	Surface flatness	a. Centre curvature b. Edge curvature c. Warpage -0.04%
	Thickness	-1.3%
	Water absorption	0.11%
	Modulus of rupture (Mpa)	47.8
	ModuBreaking stregnth (N)	2542
	Thermal shock resistance	Resistant
	Crazing resistance	Resistant
	Low concertration of acids & alkaline	Unaffected
	Cleaning products & pool detergents	Unaffected
	Resistance to stains	5

CARE & MAINTENANCE











DO

- Keep tiles clean with basic cleaning of warm water and mild soap
- Use multi-purpose spray cleaner to remove soap scum, hard water stains and mildew.
- Wipe porcelain tiles dry thoroughly after cleaning.
- Cover furniture and table legs with protectors to prevent scratches.
- Choose products in compatible with grout to avoid damage.

DO NOT

- Expose porcelain tiles to permanent inks or dyes.
- Use cleaning products containing acids, ammonia or other strong chemicals.
- Clean glazed tiles with oil-based cleaners.
- Put too much pressure on tiles.

SYMBOL

 GLAZED PORCELAIN	 UNIFORM TONE	 SLIGHT SHADE VARIATION
 WATER ABSORPTION < 0,5%	 FROST RESISTANCE RESISTE	 CRAZING RESISTANCE RESISTE
 STAIN RESISTANCE C5	 CHEMICAL RESISTANCE UA	 THERMAL RESISTANCE RESISTE
		 SLIP RESISTANCE DCOF >0,42



VIỆN VẬT LIỆU XÂY DỰNG
VĂN PHÒNG CHỨNG NHẬN

GIẤY CHỨNG NHẬN HỢP QUY

Certificate of Conformity

Số (No.): 78/2022/DNSS-VLXD

Chứng nhận sản phẩm/ Certifies that the product

GẠCH GÓM ÓP LÁT/ Ceramic Tiles

Nhóm (Group): B1.; B2.; B3.; B4.; B5.

Được sản xuất bởi/Manufactured by

CÔNG TY CỔ PHẦN SẢN XUẤT VÀ ĐẦU TƯ HOÀNG GIA
Royal Manufacture and Investment Joint Stock Company

Địa chỉ: Đường số 8, Khu CN Nham Trách II - Nham Phú, thị trấn Hiệp Phước, huyện Nham Trách, tỉnh Đồng Nai, Việt Nam
 Address: Road No.8, Nham Trách II Industrial Zone, Nham Phú, Hiệp Phước town, Nham Trách district, Dong Nai province, Vietnam.

Phù hợp / Conform to QCVN 16:2018/BSX

Công ty được phép sử dụng dấu hợp quy
 Company can bear the Quality Mark


Phương thức đánh giá/Type of product certification system
 Phương thức 5 theo Thông tư số 28/2012/TT-BKHCN ngày 12/12/2012
 System No.5 according to Circular No.28/2012/TT-BKHCN

Giấy Chứng nhận và dấu hợp quy có hiệu lực từ/ Valid from
 14/07/2022 đến / until 13/07/2025

GIÁM ĐỐC VP
 Director of BSC

 Trần Thị Thu Hà


 VIỆN TRƯỞNG
 Head of Institute of FIRM
 Trần Thị Hằng



VIỆN VẬT LIỆU XÂY DỰNG
VĂN PHÒNG CHỨNG NHẬN

GIẤY CHỨNG NHẬN HỢP CHUẨN

Certificate of Conformity

Số (No.): 85/2022/DNSS-VLXD

Chứng nhận sản phẩm/ Certifies that the product

GẠCH GÓM ÓP LÁT/ Ceramic Tiles

Nhóm (Group): B1.; B2.; B3.; B4.; B5.

Được sản xuất bởi/Manufactured by

CÔNG TY TNHH TOP TILE
Top Tile Company Limited

Địa chỉ: Khu Công nghiệp Mỹ Xuân A, phường Mỹ Xuân, thị xã Phú Mỹ, tỉnh Bà Rịa - Vũng Tàu, Việt Nam
 Address: My Xuan A Industrial Zone, My Xuan ward, Phu My town, Ba Ria - Vung Tau province, Vietnam.

Phù hợp / Conform to ISO 15006: 2018

Công ty được phép sử dụng dấu hợp chuẩn
 Company can bear the Quality Mark

Phương thức đánh giá/Type of product certification system
 Phương thức 5 theo Thông tư số 28/2012/TT-BKHCN ngày 12/12/2012
 System No.5 according to Circular No.28/2012/TT-BKHCN

Giấy Chứng nhận và dấu hợp chuẩn có hiệu lực từ/ Valid from
 25/07/2022 đến / until 24/07/2025

GIÁM ĐỐC VP
 Director of BSC

 Trần Thị Thu Hà


 VIỆN TRƯỞNG
 Head of Institute of FIRM
 Nguyễn Văn Hayah




Certificate of Registration

QUALITY MANAGEMENT SYSTEM - ISO 9001:2015

This is to certify that:

ROYAL MANUFACTURE AND INVESTMENT JOINT STOCK COMPANY
 Road 8, Nham Trách II Industrial Park - Nham Phú, Hiệp Phước Town, Nham Trách District, Dong Nai Province, Vietnam

Holds Certificate Number: **FM 559048-2**

and operates a Quality Management System which complies with the requirements of ISO 9001:2015 for the following scope:

The manufacture of advanced ceramic, porcelain and granite tiles.

For and on behalf of BSI:


 Michael Lam - Managing Director Assurance, APAC

Original Registration Date: **11/03/2010** Effective Date: **11/03/2022**
 Latest Revision Date: **08/03/2022** Expiry Date: **10/03/2025**

Page: 1 of 1




 ...making excellence a habit.




Certificate of Registration

QUALITY MANAGEMENT SYSTEM - ISO 9001:2015

This is to certify that:

TOP TILE COMPANY LIMITED
 My Xuan A Industrial Park, My Xuan Ward, Phu My Town, Ba Ria Vung Tau Province, Vietnam

Holds Certificate Number: **FM 559048-1**

and operates a Quality Management System which complies with the requirements of ISO 9001:2015 for the following scope:

The design, development and manufacture of ceramic, porcelain and polished tiles.

For and on behalf of BSI:


 Michael Lam - Managing Director Assurance, APAC

Original Registration Date: **11/03/2010** Effective Date: **11/03/2022**
 Latest Revision Date: **10/03/2022** Expiry Date: **10/03/2025**

Page: 1 of 1




 ...making excellence a habit.



ROYAL HOUSE MANUFACTURE AND INVESTMENT., JSC.

Street No.8, Nhon Trach II Industrial Zone, Nhon Trach District, Dong Nai Province, Vietnam

Tel: (+84) 251-356-9818 Fax: (+84) 251-356-0952